

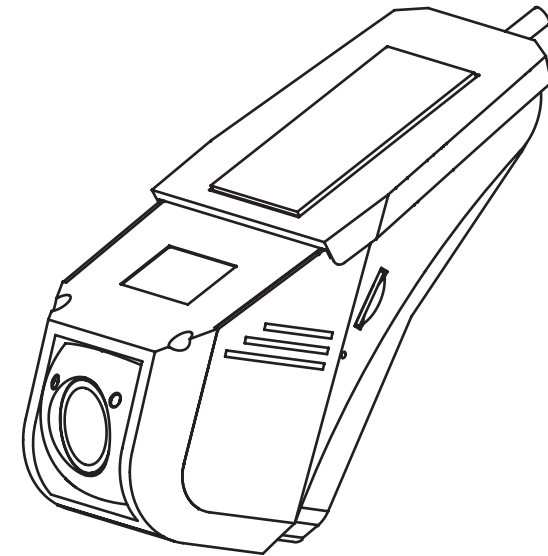
FHD5900

OWNER'S MANUAL

CAR BLACK BOX

FULL HD RECORDER FOR AUTOMOBILE

- > H.264 decoding compression
- > 1920x1080P Ultra HD TV image
- > Recycle video recording function
- > No lose any seconds recording
- > Low illumination WDR wide dynamic



⚠️ DECLARATION

The products are mainly for the driver, with the video image information to provide a vehicle periphery or pavement condition, and real-time on show and recording, to assist driver more safely driving. But because of the complexity of the road, and the driver of the different driving habits, the company does not undertake installing this product related joint and several liability of traffic accident in any case when the driving, please drive carefully, obey the traffic safety act!

TAKE NOTES BEFORE USE

Objective

This product is a professional vehicle driving recorder, to record all events in the process of driving and parking. Please read carefully before use. The manual, in order to more easily enjoy this product for you.

Product warranty

This product production enterprises through the ISO9001:2008 international quality management certification, and through the relevant safety regulations.

Patent protection statement

This product is completed by the company independently design and development, the appearance of the patent and utility model patent has been granted the national patent bureau accreditation and approval. Any without the company's permission, copy, modify the appearance of the product, used for publicity photos and their specific functions are infringing, the company will resort to the law to safeguard the legitimate rights and interests of the company.

Infringement of copyright warning

Please note that this product is for personal use only, must not infringe or violation domestic or international copyright laws and regulations and the usage mode, images are for personal use only recorded, please note that the recorded using this product in some cases show, exhibition, business image may invade copyright of others or violation other laws and regulations.

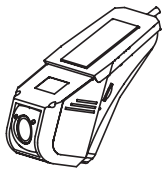



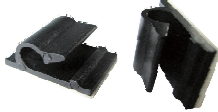
DIRECTORY SEARCH

Specification and package list	1
Product features	2
Introduce	4
How to use and installation	5
How to set	6
How to videos	7
How to play	8

Main Specification

Item	Parameter
01. Lens structure	Using full glass composition
02. Sensor	American high-definition SENSOR
03. Night vision illumination	<0.3Lux
04. Video resolution	1920X1080P 30FPS/1280X720P 60FPS/WVGA 848X480 60FPS/VGA 640X480 60FPS
05. Video file format	(H.264 compression) MOV
06. Storage medium	Micro SD/MMC (maximum support to 32GB SDHC)
07. Video length	8GB SD card:1080P/78min 720P/130min
08. Motion detection	Within 3.5 meters of the trigger recording.
09. The LCD screen	1.5,TFT LCD
10. Lithium battery	210mAh
11. Storage temperature	-10C ~70C
12. Working environment temperature	-10C ~50C
13. Working environment humidity	15~85%RH

Package List

		
Host X1	Micro SD (8G)x1	Cable X1
		
manual X1	GPS Antenna (option)	Accessory X1

Attention:

1. Picture may be slightly different from the actual product.
2. According to the product configuration you choose different, parts may be added, refer to the actual product.

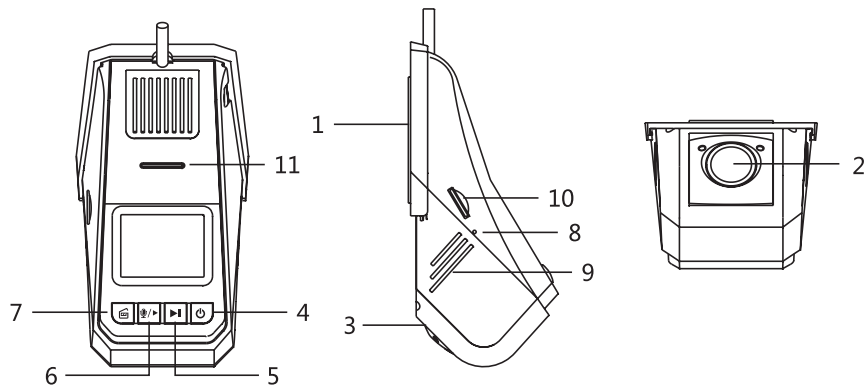
Product features

- ✓ **1080P Full HD TV image**
Full HD video solutions with all glass lens, the video resolution up to 1920x1080P30FPS.
- ✓ **High pixel clear all glass lens**
A high-definition image sensor, with professional and high pixel camera, the 130 degree wide angle view the video without blind area, made the day clear images, vivid color, also can make the license plate is visible even at night.
- ✓ **No lose any seconds recording**
Save video file, do not miss any important information, truly seamless loop video.
- ✓ **Motion detection range of 3.5 meters**
Switch on motion detection function, in the range of 3.5 meters away from moving target all and lighting changing, can trigger automatic video.
- ✓ **1.5 inch LCD screen**
1.5 "high resolution LCD display (960X240), convenient for video, photographs and other settings.
- ✓ **(WDR) wide dynamic function**
Cars driving in the dark over the environment, uniform light, dim objects in the environment is still clearly visible.
- ✓ **Low night vision illumination**
The vehicle in the condition of weak light can be seen around the object.
- ✓ **8 times fast forward rewind playback mode**
2 times, 4 times, 8 times the playback speed of fast forward and rewind, and back, in order to quickly search and browse video, and can slide way play photos.
- ✓ **9 lattice image preview**
Enter play mode, video files and photos can be divided by 9 lattice preview of the selected file and convenient.
- ✓ **H.264 decoding compression**
High data compression ratio of mainstream, saving storage space and ensures the image data of high quality and smooth, H.264 format is more superior than the ordinary decompression format, more advanced, more save the memory card space.
- ✓ **Recycle video recording function**
Save the file length of 1 minutes, 2 minutes, 3 minutes, automatically delete old files when the memory card is full, save the new file.

Product features

- ✓ **The G-SENSOR function**
The system has three axial gravity sensor, when the collision or subject to strong vibration, system will lock the current video files and save. The storage card can allocate 50% of capacity for the storage of G documents.
- ✓ **The real-time output HDMI**
Full high definition 1920X1080P30FPS HD MI signal output, can be video, photos and video broadcast directly in the HD terminal.
- ✓ **MOV video format**
Save the file in MOV format, suitable for the majority of PC and portable media player to preview.
- ✓ **Parking Mode function:**
ACC off the parking mode is on, motion detection and G-sensor is trigger. Once the camera detects the picture movement within 3.5 meters or the car is vibration, the record is start.
- ✓ **USB2.0 data transmission**
High speed USB interface, convenient connection with the computer, file copy, move, delete operation.
- ✓ **A variety of video start mode**
Manual button, car charger for electric start, motion detection trigger, G-sensor trigger start etc..
- ✓ **Delay shutdown function**
Set the delay shutdown time, car charger after pulled out, the machine will automatically shutdown time delay, set: 5 mins and closed.
- ✓ **Low battery alarm function**
When the battery power is low, the system will alarm, and shut down the system.
- ✓ **The AV-OUT function**
Video output to other screen or DVD host.
- ✓ **The built-in speaker**
Built-in AC-3 speaker, for file playback, touch sound, video state reminding, photo electricity remind state reminding, etc....
- ✓ **Multi language support**
Supports English, German, French, Korean, Russian, Portuguese, Chinese simplified, Chinese traditional, Japanese, spanish.
- ✓ **Low power consumption**
The low power consumption, when standby small current, can work for a long time, can meet the green environmental protection standards.

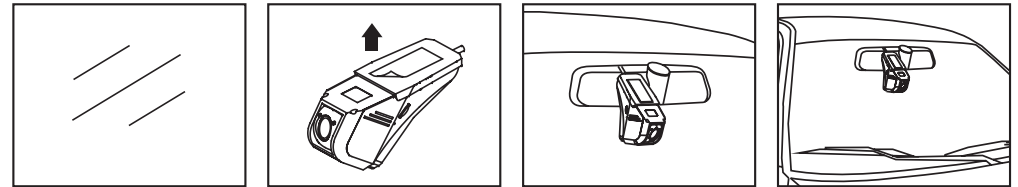
Introduce



- 1、 **3M adhesive** (use for pasting)
- 2、 **Lens**: optical components, for video and camera viewfinder, please keep the lens clean;
- 3、 **Lens angle adjustment** :adjust the lens angle following your needs;
- 4、 **"⏻" Power key** (two functions)
 - POWER** :3 seconds press shutdown, screen ON or OFF by short press ;
 - UP BUTTON** :ON 9 grip replay interface and system menu status, press UP button to select file, during play status, press"UP"to select next file or fast-fomard;
- 5、 **"▶"KEY**:(two functions)
 - "NEXT" button**: ON 9 grip replay interface and system menu status, press next button to select file,during play status,press"NEXT"to select next file or fast-fomard;
 - "FORMAT" button**: on non-record press "FORMAT"button continuously for 3 seconds it shows"FORMAT"into SD card format process with the di di.....alarming, after format, "FORMAT"disappeared;
- 6、 **"⏪/▶" KEY**:(three functions)
 - "PLAY" function**: PLAY the radio when stand by;
 - "OK" button**: On non-record ,press "⏪/▶"button continuously for 3 seconds it shows menu, press "▶"(down) or "⏻"(up)to set ,after setting, press "OK"to save and return back;
 - "MIC"press**: when recording ,turn on MIC , press"⏪/▶"again , turn off MIC;
- 7、 **"⏸" press**:(two functions)
 - Record button** : It is used for starting record on any standby record mode or stop recording, the indicate light twinkle when recording ,if not ,the light off;
 - timing function** :On standby mode ,3 seconds press into time setting ,press "up" and "down" to set date and time ,press"⏸"into next setting ,after setting press"⏪/▶"log out and save;
- 8、 **Reset button**: reset button for system reset;
- 9、 **Heat radiation hole**: keep appropriate working temperature;
- 10、 **Micro SD slot**: for SD card;
- 11、 **loudspeaker**: high quality loudspeaker;

How to use and installation

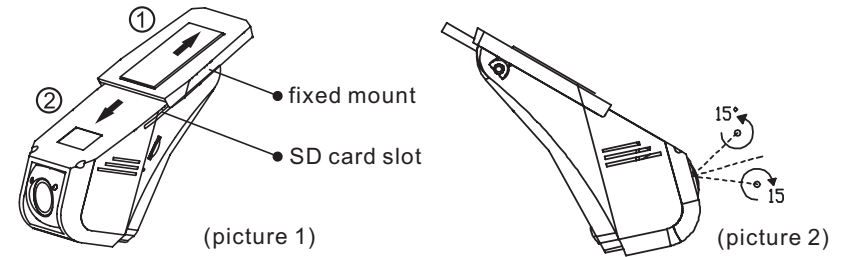
► How to installation



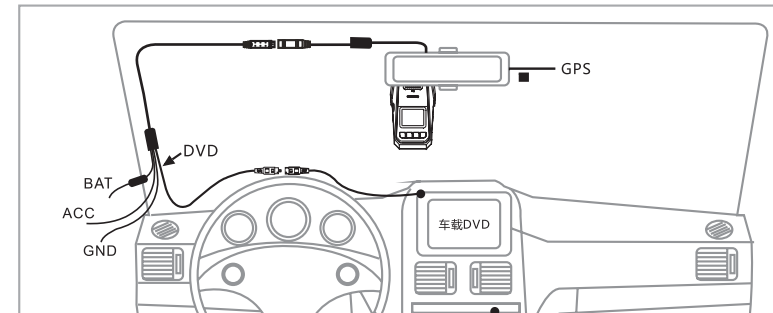
- 1,Clean the window and choose good position to mount.
- 2,Tear down the 3M from the bracket.
- 3,To plaster on the car window.
- 4.Installation finished.

► How to mount /disassemble & lens angle adjust

- 1、 Assembling the host following direction of narrow ① following the direction of narrow ② push the host to disassemble it . (as picture 1)
- 2、 the lens angle can be adjusted 30 degree (as picture 2)



► Electrical Connect Instruction

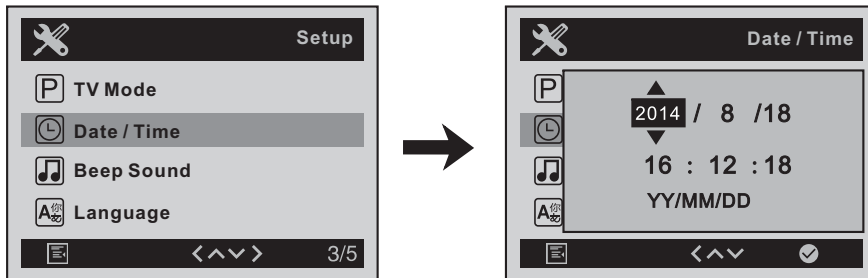


Note:
please follow this instruction, or it will cause problem

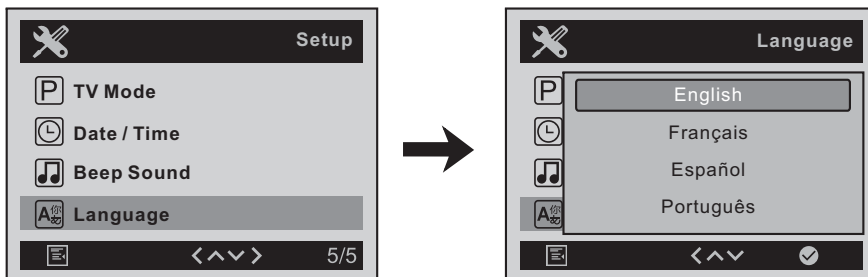
- 1、 The wiring connects to the car BAT ,ACC and GND (remind distinguish BAT ,ACC and GND)
- 2、 The other end of the wiring connects to the host cable ,and confirm good connection
- 3、 Fixing the cables with the wire clips
- 4、 Install it near to the back mirror to get a better view
- 5、 Mount position should far from the safety airbag
- 6、 In order to get better GPS signal ,please install the GPS antenna in horizontal position ensure nothing do disturb.

How to set

On standby status, press "⏸" continuously 3 seconds into menu, press "▶" or "⏻" to select item. Press "⏸" 3 seconds for confirmation, press "⏪" for return.



- [G-Sensor]** off/low/middle/high ;
- [Beep Sound]** setting voice sound key button to on and close : on / off;
- [Language]** set required language: English, German, French, Italian, Russian, Portuguese, simplified, traditional Chinese, Japanese, spanish;

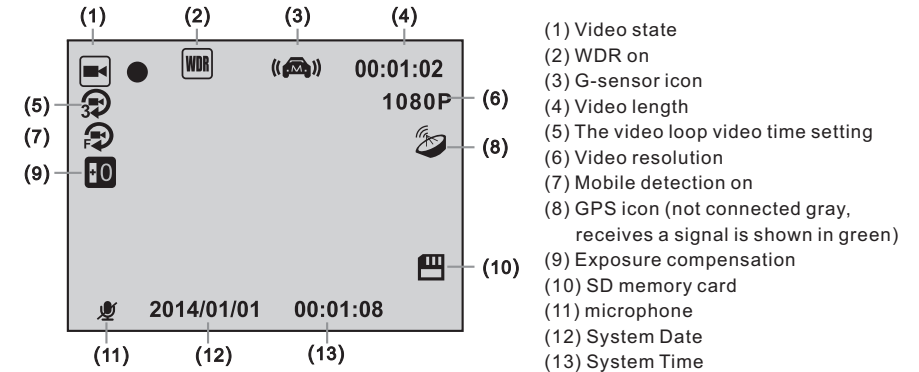


- [TV Mode]** set TV mode: PAL/NTSC;
- [Frequency]** set frequency source : 50Hz, 60Hz;
- [Parking Mode]** on/off, on means when ACC on it come into parking mode automatically;
- [Default Settings]** to restore to factory settings: confirm / cancel; (Note: when choosing "confirm", will all parameters are modified to factory default settings);
- [Format]** used for storage of SD card format: Yes / no (Note: select "yes" will format the SD card, remove the card of all documents, please careful operation);
- [Version]** see the machine software version.

How to videos

▶ Video operation

After switch on and press "⏸" video to recording, lights flashing white. Appears on the top left corner "📹 ●" sign flashes (below), again by "⏸" video button that stop recording and save the current file. Recording process by pressing "⏸" can be opened or closed in recording. It is appearance "⏸" indicate the recording, or "⏸" is mute.



(The video menu view)

▶ Video settings

Press "MENU" button enter into video standby and setting.

- [Video resolution]** video resolution setting image resolution: 1080P (1920x1080 30fps) / 720P (1280x720 60fps) / 720P (1280x720 30fps) / WVGA (848x480 60fps) / VGA (640x480 60fps);
- [Video cycle]** set cycle recording time: 1 minutes / 2 minutes / 3 minutes;
- [WDR]** set WDR state: on / off;
- [Exposure compensation]** set exposure compensation exposure value: -2.0, +2.0, +5/3, +4/3, +1.0, +2/3, +1/3, +0.0, -1/3, -2/3, -1.0, -4/3, -5/3;
- [Motion detection recording]** mobile detection set mobile detecting switch : on / off;
- [Video audio]** set audio opening and closing: on / off;
- [Date label]** when the video label set date of switch on and closing: on / off;

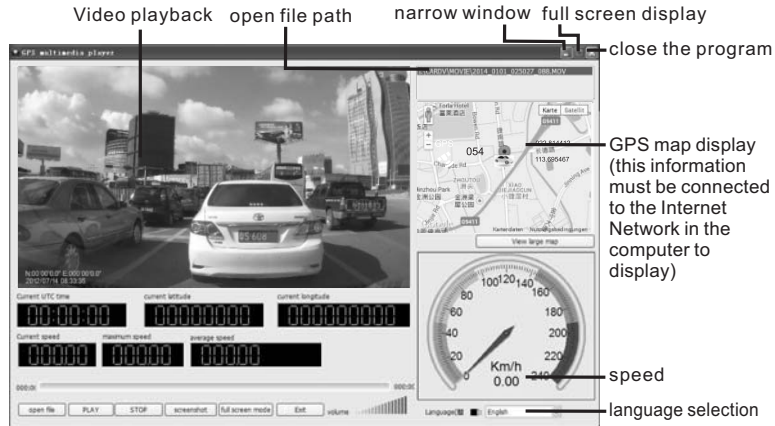
▶ Video operation

On standby press "⏸" it will into 9 girp status, press "▶" or "⏻" to select file, and then press "⏸" to play. During playing press "▶" as fast forward (2x/4x/8), press "⏻" as back forward (2x/4x/8).

How to play

► The player in host

Press the "PLAY" key to enter play mode, press up, down, left, right and then press "OK" button to play the file, then press the stop button to play, in the process of rewind, fast forward, keys: 2X, 4X, 8X three kinds of speed and fast backward way of playing as "; backwards down keys". Video through HDMI HD signal line output to the TV to see.



GPS play view

PC player installation instructions:

- 1.The PC player software built-in storage in the TF card , users in the first , please install the software to the PC terminal, and avoid the system after formatting software lost cause;
- 2.The user can be in the official website (www.yuntom.com) to download and install the software.

Troubleshooting

1.[No Video and Photo]

Please amend the video or photo resolution, or check whether there is enough space for the storage card and check the storage card is installed correctly;

2.[No signal is output to the TV]

Please confirm whether correctly connected with the TV, and check whether HDMI socket contact in place;

3.[video or photo images are not clear]

Please check the lens or automotive glass is dirt, please use a soft cloth to clean;

4.[normal video process state light does not flash or keypad failure]

System on, please reset the system with the "RESET" key, and press "POWER" key to restart;

5.[when the system settings confusion]

Please enter "MENU", enter the "default settings" can be restored to factory settings;