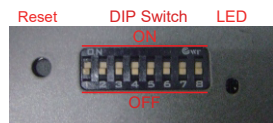
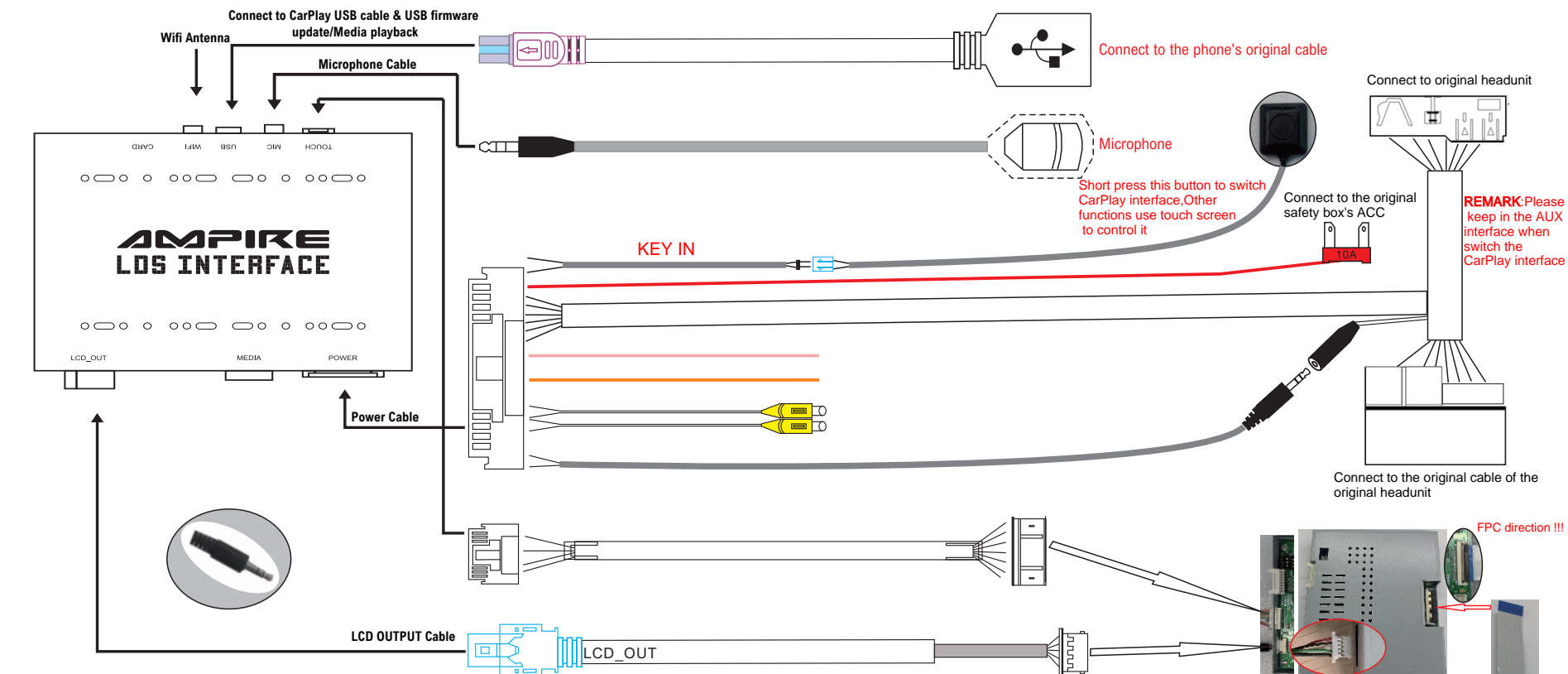


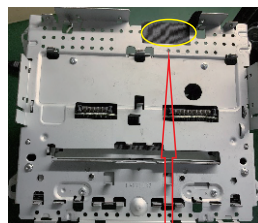
Porsche(Bose CDR3.1-2010~2016) WIRING DIAGRAM---LDS-CDR31-MINI



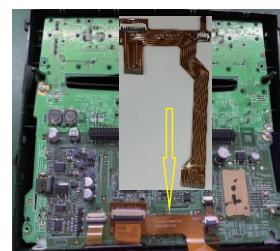
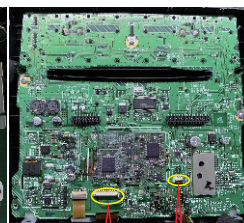
DIP SWITCH SETTING

(After changing the dip code, press "reset" or power-on again)

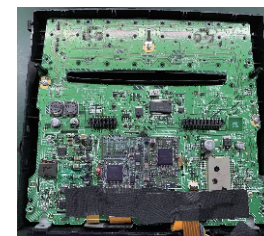
PIN1	OFF / ON	NG/Bose CDR3.1system
PIN2	OFF / ON	NG / Touch point coordinate correction, and then turn "OFF"
PIN3	OFF / ON	NG/NG
PIN4	OFF / ON	NG/NG
PIN5	OFF / ON	NG/NG
PIN6	OFF / ON	NG/NG
PIN7	OFF / ON	NG/NG
PIN8	OFF / ON	NG/NG



1) Separate the removed host and the panel, stick the protective tape at the position shown in the figure, and open the 30PIN wiring and 4PIN touch wiring of the display.



2) Take out the FPC cable as shown and install it as required to avoid short circuit



3) Cover the FPC cable with tape and install the original panel, then connect the FPC extension cable to the adapter plate as shown in the picture above.

