

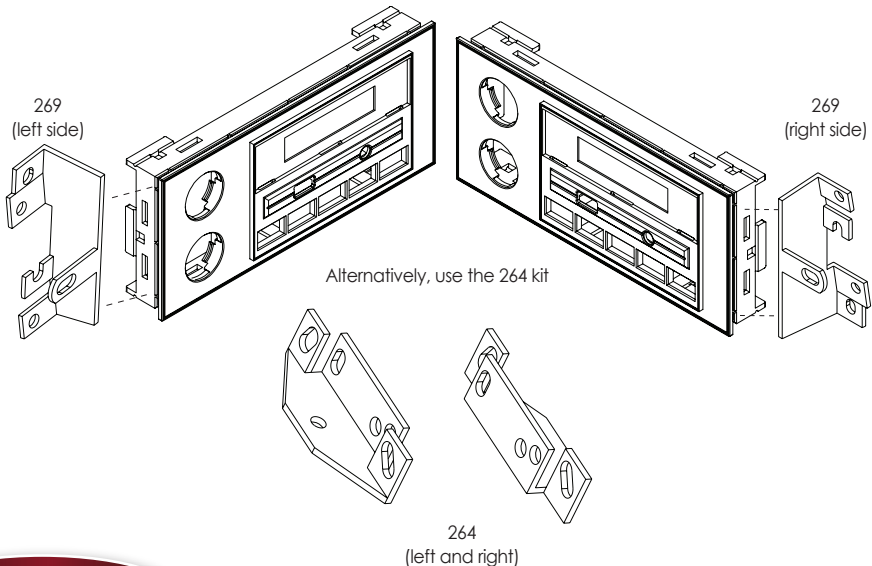
264/269 KIT

Installation instructions for:

- Buick Century 1982-96
- Buick Electra 1984-94
- Buick Estate Wagon 1984-94
- Buick LeSabre 1984-94
- Buick Park Avenue 1984-94
- Buick Reatta 1990-91
- Buick Regal 1984-87
- Buick Riviera 1983-85
- Buick Riviera 1990-95
- Buick Skyhawk 1982-89
- Buick Skylark 1983-85
- Buick Skylark 1987-95
- Cadillac Deville 1985-93
- Cadillac Eldorado 1984-91
- Cadillac Fleetwood 1985-93
- Cadillac Seville 1984-91
- Chevrolet Blazer (full size) 1989-91
- Chevrolet Celebrity 1982-87
- Chevrolet Citation 1985
- Chevrolet Corvette 1984-89
- Chevrolet Suburban 1989-91
- GMC Jimmy (full size) 1989-91
- GMC Suburban 1989-91
- Oldsmobile Achieva 1992-95
- Oldsmobile Cutlass Calais 1984-91
- Oldsmobile Cutlass Ciera 1982-96
- Oldsmobile Cutlass Supreme 1984-88
- Oldsmobile Delta 88 1986-88
- Oldsmobile Firenza 1982-89
- Oldsmobile 98 1984-90
- Oldsmobile Toronado 1982-85
- Pontiac Bonneville 1982-93
- Pontiac Fiero 1984-88
- Pontiac Grand Am 1985-95
- Pontiac Grand Prix 1985-87

Once the original radio is removed, be sure to **keep the factory brackets**. If the original brackets are lost or missing, follow the guide below. You may need to use and modify additional parts that are included with your Newport in order to complete the installation.

Make sure you test the fitment before installing.



WIRING CODES

In your vehicle specific kit, you'll find a wiring harness for your vehicle. This wiring harness plugs directly into your factory wiring harness. Listed below are the vehicle specific color codes from your factory wiring harness. These are for reference only. Always make sure to test your wiring to ensure that they are correct. If your vehicle is equipped with a factory Delco/Bose sound system, you will require a special adapter to install your Newport if you wish to retain your factory amplified speaker system.

GENERAL MOTORS

Memory (+12 volt constant) Orange
Ignition (+12 volt switched) Yellow
Ground (-) Black
Illumination Gray
Dimmer Brown
Power Antenna Pink

Speakers

Right Front (+) Light Green
Right Front (-) Dark Green
Left Front (+) Tan
Left Front (-) Gray
Right Rear (+) Dark Blue
Right Rear (-) Light Blue
Left Rear (+) Brown
Left Rear (-) Yellow