

Newport

270 KIT



MODERN SOUND FOR YOUR CLASSIC

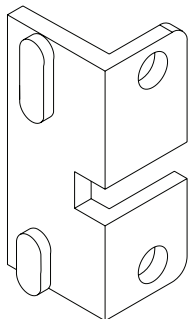
retrosound.com

270 KIT

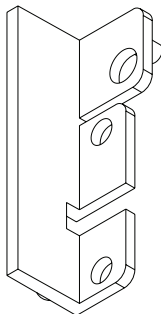
Installation instructions for:

- Chrysler Cirrus 1995-00
- Chrysler Concorde 1993-97
- Chrysler Cordoba 1975-83
- Chrysler E-Class 1983-97
- Chrysler 5th Avenue 1979-93
- Chrysler Imperial 1982-83
- Chrysler Imperial 1990-93
- Chrysler Laser 1984-89
- Chrysler LeBaron 1977-95
- Chrysler LeBaron GTS 1985-95
- Chrysler LHS 1995-98
- Chrysler Neon 1995-99
- Chrysler your Newport 1977-1981
- Chrysler New Yorker 1975-96
- Chrysler Sebring (convertible) 1996-00
- Chrysler Sebring 1995-00
- Chrysler Town & Country 1990-00
- Dodge Aries 1981-89
- Dodge Aspen 1976-80
- Dodge Avenger 1995-00
- Dodge Caravan 1984-00
- Dodge Charger 1974-78
- Dodge Charger 1981-87
- Dodge Dakota 1987-00
- Dodge Daytona 1984-93
- Dodge Diplomat 1976-89
- Dodge Durango 1997-00
- Dodge Dynasty 1988-93
- Dodge Intrepid 1993-97
- Dodge Lancer 1986-89
- Dodge Magnum XE 1978-97
- Dodge Mirada 1979-89
- Dodge Neon 1995-99
- Dodge Omni 1978-90
- Dodge Pickup 1974-83
- Dodge Ram 1994-01
- Dodge Ramcharger 1974-93
- Dodge Rampage 1978-82
- Dodge Shadow 1987-95
- Dodge Spirit 1989-95
- Dodge Stratus 1995-99
- Dodge St. Regis 1979-81
- Dodge Van 1978-03
- Dodge 024 1978-82
- Dodge 400 1982-83
- Dodge 600 1983-87
- Eagle Vision 1993-97
- Ford Aerostar 1985-91
- Ford Country Squire 1979-89
- Ford Crown Victoria 1983-89
- Ford LTD 1979-86
- Ford Ranger (mini) 1983-88
- Ford Thunderbird 1980-88
- Jeep Cherokee 1997-01
- Jeep Grand Cherokee 1993-98
- Jeep Wrangler 1997-02
- Lincoln Continental 1985-89
- Lincoln Mark VII 1984-88
- Mercury Colony Park 1979-89
- Mercury Cougar 1983-88
- Mercury Cougar XR7 1980-82
- Mercury Grand Marquis 1979-85
- Mercury Marquis 1979-88
- Plymouth Acclaim 1989-95
- Plymouth Breeze 1996-99
- Plymouth Caravelle 1985-87
- Plymouth Fury 1975-78
- Plymouth Gran Fury 1978-89
- Plymouth Horizon 1978-83
- Plymouth Neon 1994-99
- Plymouth Reliant 1981-89
- Plymouth Scamp 1983-84
- Plymouth Sundance 1987-94
- Plymouth TC3 1978-82
- Plymouth Trailduster 1975-81
- Plymouth Turismo 1983-87
- Plymouth Van 1978-80
- Plymouth Voyager 1984-00

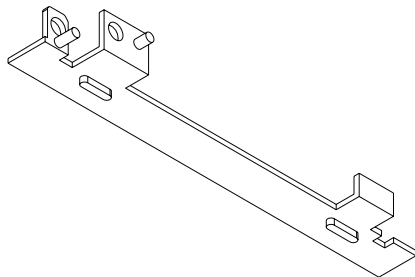
270 KIT



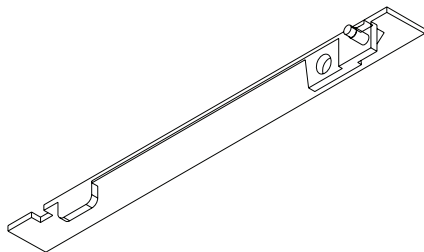
Bracket #1



Bracket #2



Bracket #3



Bracket #4

270 KIT

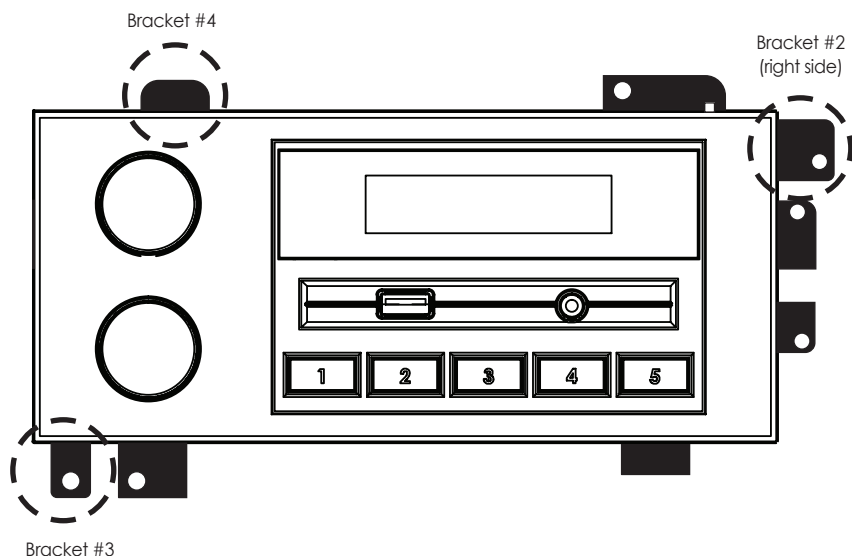
Installation instructions for:

- All Chrysler, Dodge, Eagle, Jeep and Plymouth Vehicles listed on page 1 (except Cirrus, Sebring, Sebring Convertible, Avenger, Breeze and 1993-95 Grand Cherokee)

Once the original radio has been removed, use the included nuts and bolts to fasten the brackets to the top, bottom and right side of your Newport.

Make sure to test fit the radio first before mounting or modifying the brackets.

For this installation you will use the tabs circled in the diagram. To fit your vehicle you will need to remove all of the other plastic tabs on the brackets. You may also need to use and/or modify additional parts included with your Newport to complete the installation. Again, make sure to test the fitment before installing.



270 KIT

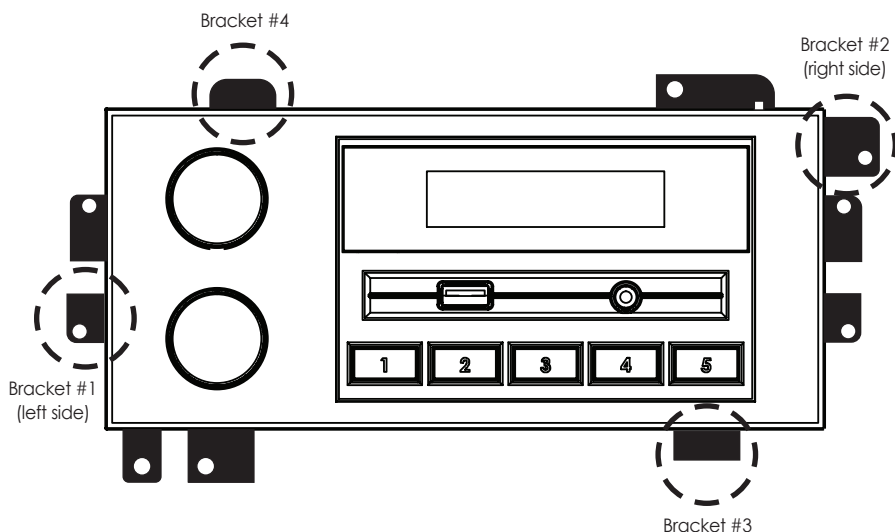
Installation instructions for:

- Chrysler Cirrus 1995-00
- Chrysler Sebring (convertible) 1996-00
- Dodge Stratus 1995-99
- Plymouth Breeze 1996-99

Once the original radio has been removed, use the included nuts and bolts to fasten the brackets to the top, bottom and sides of your Newport.

Make sure to test fit the radio first before mounting or modifying the brackets.

For this installation you will use the tabs circled in the diagram. To fit your vehicle you will need to remove all of the other plastic tabs on the brackets. You may also need to use and/or modify additional parts included with your Newport to complete the installation. Again, make sure to test the fitment before installing.



270 KIT

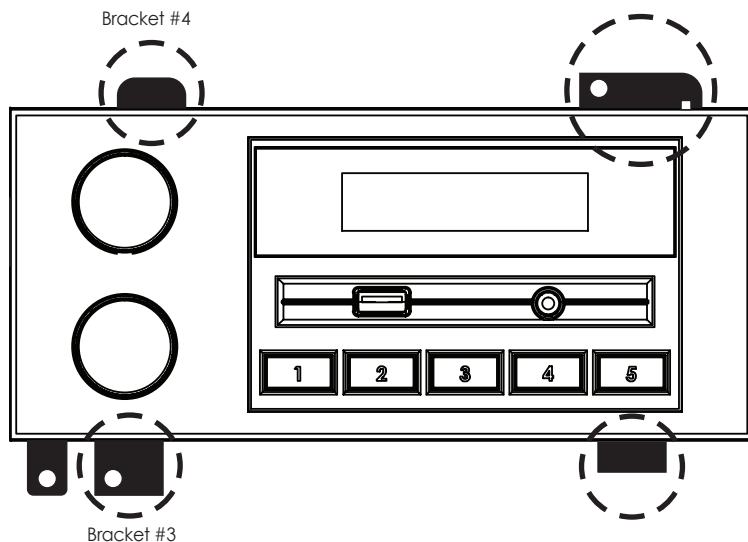
Installation instructions for:

- Chrysler Sebring 1995-00
- Dodge Avenger 1995-00
- Jeep Grand Cherokee 1993-95

Once the original radio has been removed, use the included nuts and bolts to fasten the brackets to the top and bottom of your Newport.

Make sure to test fit the radio first before mounting or modifying the brackets.

For this installation you will use the tabs circled in the diagram. To fit your vehicle you will need to remove all of the other plastic tabs on the brackets. You may also need to use and/or modify additional parts included with your Newport to complete the installation. Again, make sure to test the fitment before installing.



270 KIT

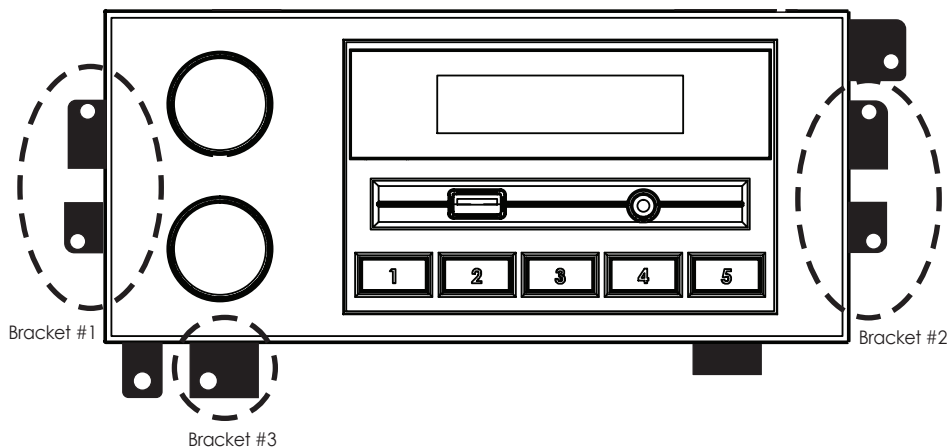
Installation instructions for:

- All Ford/Lincoln/Mercury Vehicles listed on page 1 1974-03

Once the original radio has been removed, use the included nuts and bolts to fasten the brackets to the bottom and sides of your Newport.

Make sure to test fit the radio first before mounting or modifying the brackets.

For this installation you will use the tabs circled in the diagram. To fit your vehicle you will need to remove all of the other plastic tabs on the brackets. You may also need to use and/or modify additional parts included with your Newport to complete the installation. Again, make sure to test the fitment before installing.



WIRING CODES

In your vehicle specific kit, you'll find a wiring harness for your vehicle. This wiring harness plugs directly into your factory wiring harness. Listed below are the vehicle specific color codes from your factory wiring harness. These are for reference only. Always make sure to test your wiring to ensure that they are correct. If your vehicle is equipped with a factory Delco/Bose sound system, you will require a special adapter to install your Newport if you wish to retain your factory amplified speaker system.

FORD/LINCOLN/MERCURY

Some late 70's to early 80's Fords may have a factory common ground system. You may need to re-wire the speakers or purchase a common ground adapter from your local car audio retailer.

Power

Memory (+12 volt constant) Green/Yellow
Ignition (+12 volt switched) Yellow/Black
Ground (-) Black or Fat Red
Illumination Orange
Dimmer Orange/White
Power Antenna Blue (varies greatly)

Speakers

Right front (+) White/Green
Right Front (-) Green/Orange
Left Front (+) Orange/Green
Left Front (-) Light Blue
Right Rear (+) Pink/Blue
Right Rear (-) Pink/Blue

DODGE/CHRYSLER/PLYMOUTH

Memory (+12 volt constant) Red/White
Ignition (+12 volt switched) Red
Ground (-) Black or Braided Silver
Illumination Orange
Dimmer (none)
Power Antenna Yellow

Speakers

Right Front (+) Violet
Right Front (-) Blue/Red
Left Front (+) Green
Left Front (-) Brown/Red
Right Rear (+) Blue/White
Right Rear (-) Blue/Red
Left Rear (+) Brown/Yellow
Left Rear (-) Brown/Red

JEEP/EAGLE

Power

Memory (+12 volt constant) Pink
Ignition (+12 volt switched) Violet/White
Ground (-) Black
Illumination Orange
Dimmer Blue/White
Power Antenna None

Speakers

Right Front (+) White
Right Front (-) Black
Left Front (+) Green
Left Front (-) Black/Yellow
Right Rear (+) White/Black
Right Rear (-) Brown
Left Rear (+) Green/White
Left Rear (-) Brown/White